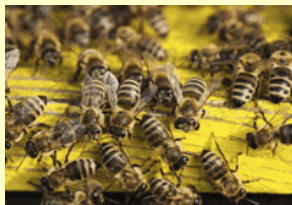


**Pest Control • Bees • Bee Swarms • Bee Stings**



**Bees are venomous • sometimes deadly • when they swarm**

• **Common problem:** Bees swarms can be a serious problem during summer. Most often when commercial honey bees swarm to establish a new hive inside a wall cavity of a residential or commercial building.

swelling of the skin, particularly of children and people with a fair complexion. Some people are highly to the venom of bees and deaths are reported to occur in Australia every year as a result.

• **Extremely aggressive:** A swarm of bees can be extremely aggressive and may attack a person in such large numbers as to cause death. The bee venom is highly toxic and may cause hideous

• **Allergic reaction:** In some cases, death may arise to people who are allergic to the bee venom or who are bitten by the swarm of bees in large numbers.

**Pest Control • Bee Swarms • Safety First**

• **Do Not** attempt to eradicate a group of swarming bees, unless you have the complete range of protective equipment and professional knowledge essential in the circumstances.

completely eradicate a bee swarm from a residential premises - using proper protective measures and the more expensive (but much safer) pyrethroid insecticides - will be approx \$200 and \$300 depending on size of infestation and access constraints.

• **The cost** of professional pest control service to

**Bee Stings • Prevention • First Aid • Treatment**

• **Bees are attracted** by strong smells and bright colours. They are most active on bright sunny days. Honey bees normally only sting when defending themselves. Most bee stings occur when they are stepped on by bare feet. Avoid wearing perfume when outside. Never attempt to remove a bee colony or nest yourself.

• **The best way to deal with a bee sting** is to scrape it off with a sideways motion using a firm object such as the blade of a knife, a credit card, or even a finger nail. Try not to squeeze the venom sac. However, quick removal of the sting is more important than how you do it. Ice should immediately be applied to the area.

• **Always call the medical professional.** One of the most dangerous places to be stung by a bee is inside the mouth. The resulting swelling can block off breathing with fatal results. This usually happens as a result of having a drink outside and not noticing a bee getting into it. This can easily happen if drinking out of a can. Always use a straw if drinking from a can.

• **Apply compression bandage** to the arm or leg and the patient encouraged not to move, if the person who has been stung is known to react badly to bee stings and the patient encouraged not to move. Medical help should be sought immediately. An injection of adrenaline, such as from an EpiPen, may be needed to overcome the reaction.

**RING FUMAPEST ON 1300 241 500 FOR PEST CONTROL OF BEES**